

FOR SALE ~ 49,280 SQUARE FEET | RETAIL/OFFICE/WAREHOUSE/FLEX

18110 W BLUEMOUND ROAD, TOWN OF BROOKFIELD



FEATURES

TOTAL SQUARE FOOTAGE:
~49,280 sq. ft.

FIRST FLOOR RETAIL:
~15,680 sq. ft.

LOWER LEVEL OFFICE:
~15,680 sq. ft.

WAREHOUSE:
~17,920 sq. ft.

LOT SIZE:
2.248 acres

LOADING:
One (1) Dock
Three (3) Drive-ins

WAREHOUSE CLEAR HEIGHT:
22 ft.

CONSTRUCTION:
Masonry/Spancrete

YEAR BUILT:
1982

ZONING:
B2, Limited General Business District

UTILITIES:
Municipal sewer & water

RESTROOMS:
Several throughout

PROPERTY OVERVIEW

- A mix of retail, office and warehouse/flex on Bluemound Road in the Town of Brookfield.
- Currently a multi-tenant investment property, which could be converted to single use owner/user.
- Over 2 acres with an abundance of parking to the North and potential for future expansion.
- The lower level office space could be converted to low bay warehouse space.
- Several restrooms throughout both levels.
- New roof, some new HVAC units, and newly paved on the south and west sides.
- Warehouse is currently being used as a mini-storage facility, which is included in the sale.

PRICING

SALE PRICE:
\$4,900,000

LEASE RATES:
Vary

ESTIMATED NNN COSTS:
\$2.25/sq. foot

2022 REAL ESTATE TAXES:
\$43,152.91



CAPITAL
COMMERCIAL

STRATEGIC REAL ESTATE ADVISORS

For more information, contact listing brokers:

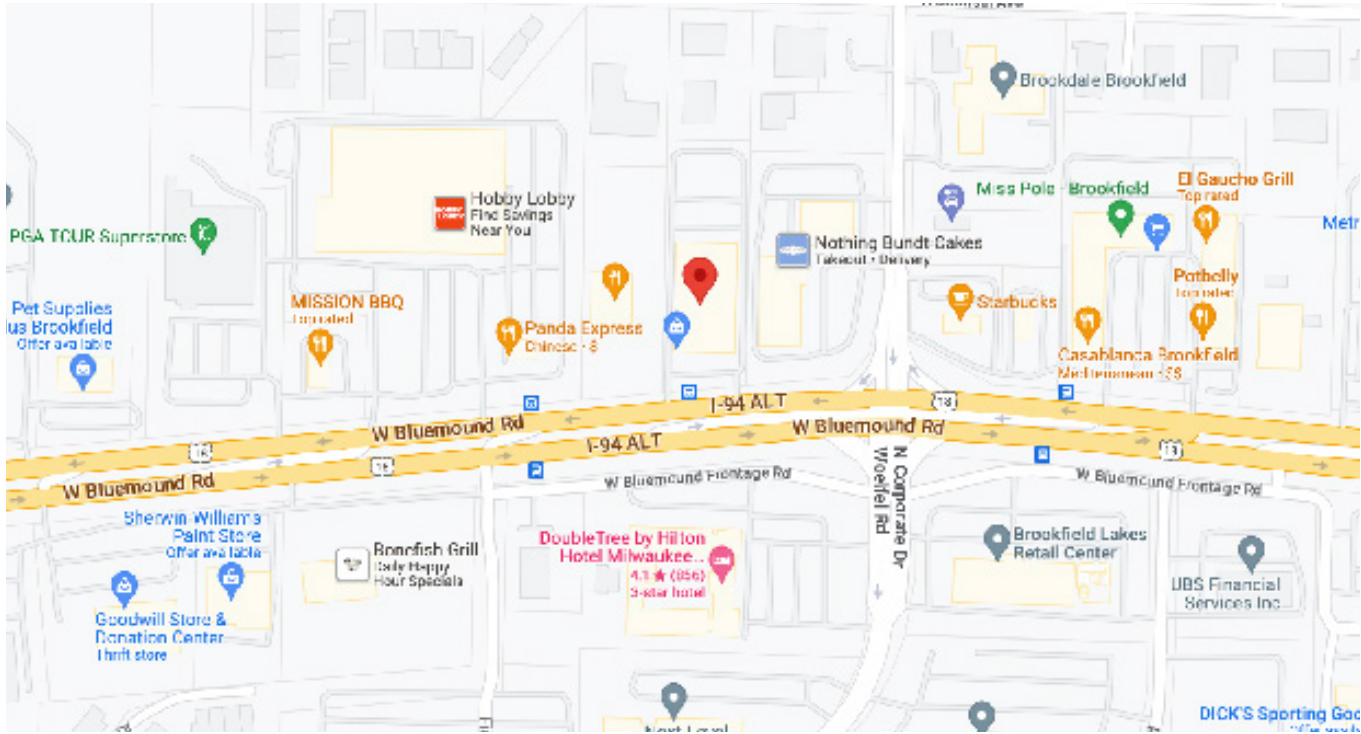
MATTHEW QUEST

mquest@capital-cre.com

KEVIN CRARY

kcrary@capital-cre.com

LOCATION



18110 W BLUEMOUND ROAD, TOWN OF BROOKFIELD



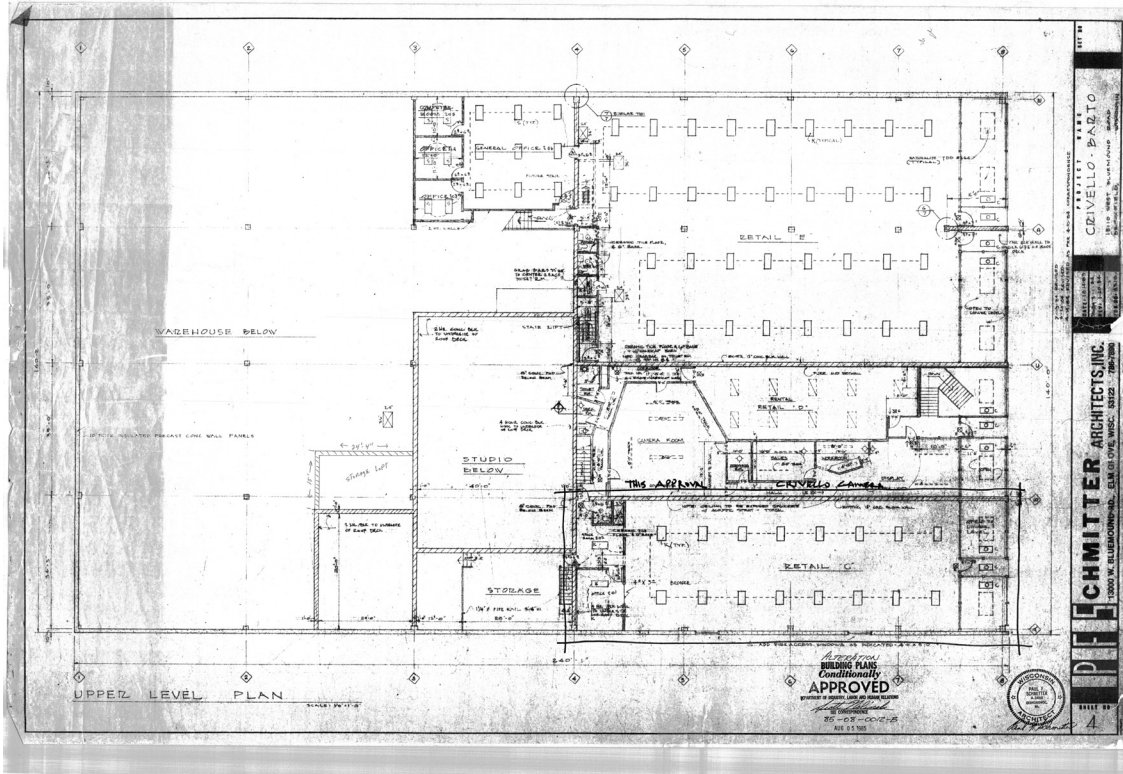
For more information, contact listing brokers:

MATTHEW QUEST
mquest@capital-cre.com

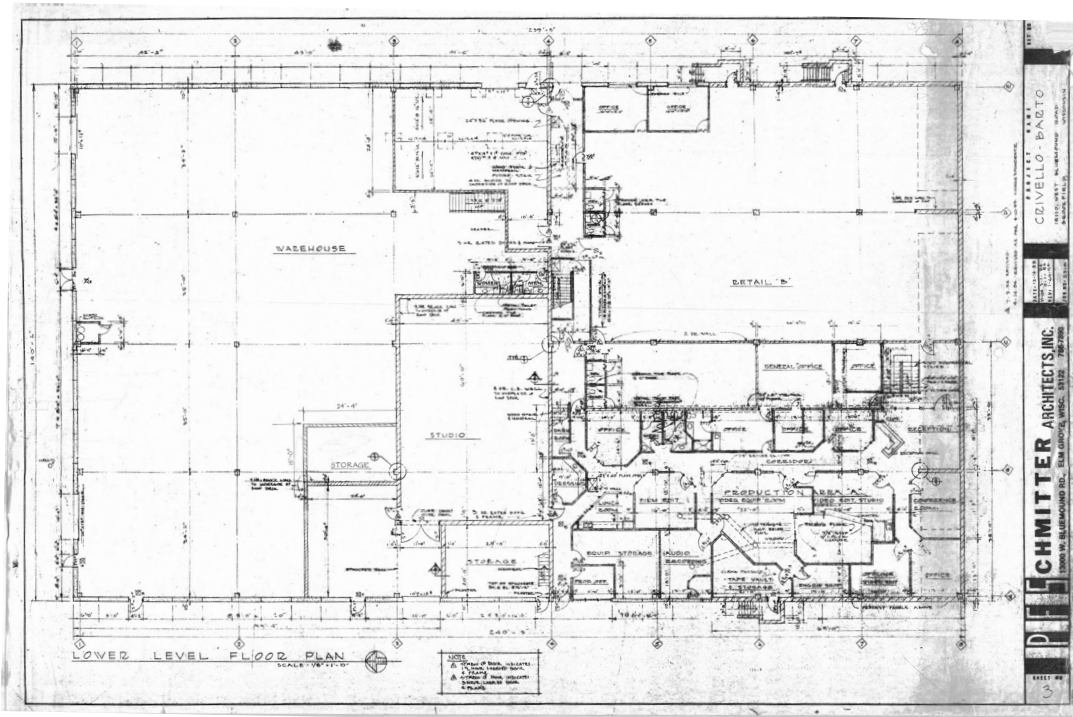
KEVIN CRARY
kcrary@capital-cre.com

FLOOR PLANS

UPPER LEVEL



LOWER LEVEL



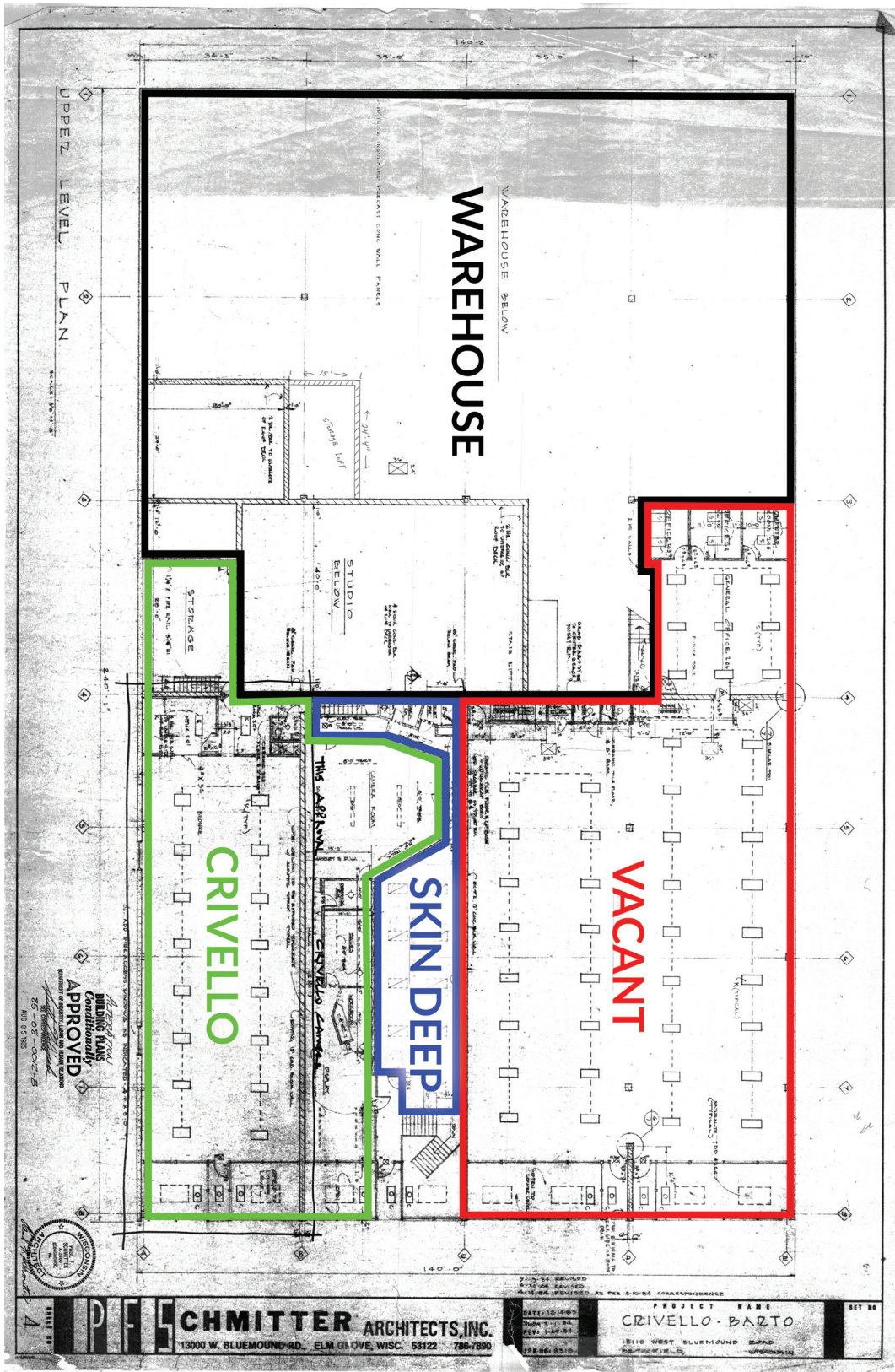
For more information, contact listing brokers:

MATTHEW QUEST
mquest@capital-cre.com

KEVIN CRARY
kcrary@capital-cre.com

FIRST FLOOR RETAIL

18110 W BLUEMOUND ROAD, TOWN OF BROOKFIELD



For more information, contact listing brokers:

MATTHEW QUEST
mquest@capital-cre.com

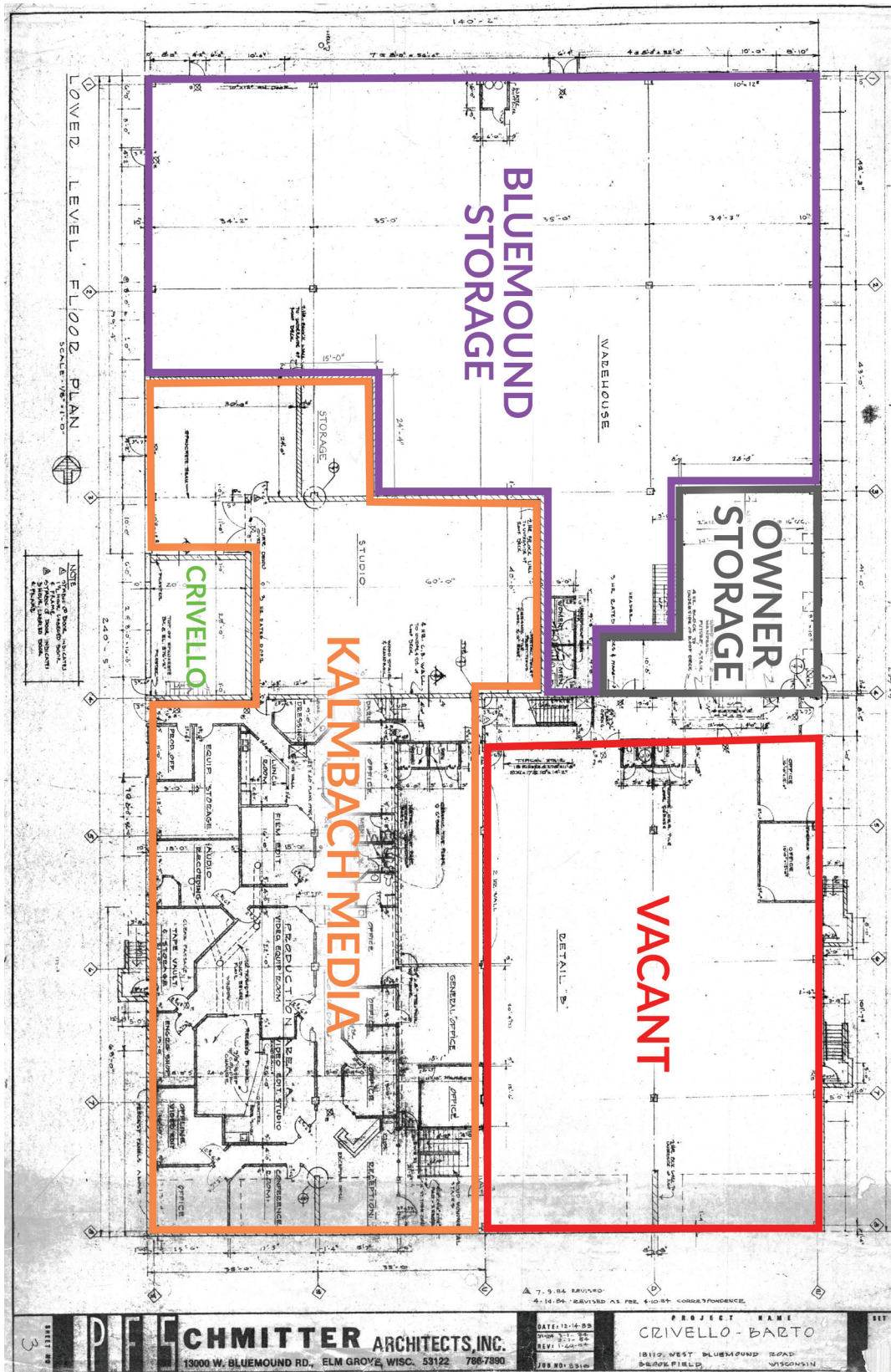
KEVIN CRARY
kcrary@capital-cre.com

WHAT IS YOUR REAL ESTATE STRATEGY?

262.347.0700 | capital-cre.com

LOWER LEVEL OFFICE AND WAREHOUSE

18110 W BLUEMOUND ROAD, TOWN OF BROOKFIELD



For more information, contact listing brokers:

MATTHEW QUEST
mquest@capital-cre.com

KEVIN CRARY
kcrary@capital-cre.com

PHOTOS



18110 W BLUEMOUND ROAD, TOWN OF BROOKFIELD



For more information, contact listing brokers:

MATTHEW QUEST
mquest@capital-cre.com

KEVIN CRARY
kcrary@capital-cre.com

STATE OF WISCONSIN BROKER DISCLOSURE to Non-Residential Customers

Wisconsin Law requires all real estate licensees to give the following information about brokerage services to prospective customer

Prior to negotiating on your behalf the Broker must provide you the following disclosure statement:

BROKER DISCLOSURE TO CUSTOMERS

You are the customer of the broker. The broker is either an agent of another party in the transaction or a sub agent of another broker who is the agent of another party in the transaction. The broker, or a salesperson acting on the behalf of the broker, may provide brokerage services to you. Whenever the broker is providing brokerage services to you, the broker owes you, the customer, the following duties:

- + *The duty to prove brokerage services to you fairly and honestly.*
- + *The duty to exercise reasonable skill and care in providing brokerage services to you.*
- + *The duty to provide you with accurate information about market conditions within a reasonable time if you request it, unless disclosure of the information is prohibited by law.*
- + *The duty to disclose to you in writing certain material adverse facts about a property, unless disclosure of the information is prohibited by law (see "Definition of Material Adverse Facts" below).*
- + *The duty to protect your confidentiality. Unless the law requires it, the broker will not disclose your confidential information of other parties.*
- + *The duty to safeguard trust funds and other property the broker holds.*
- + *The duty, when negotiating, to present contract proposals in an objective and unbiased manner and disclose the advantages and disadvantages of the proposals.*

Please review this information carefully. A broker or salesperson can answer your questions about brokerage services, but if you need legal advice, tax advice, or a professional home inspection, contact an attorney, tax advisor, or home inspector.

This disclosure is required by section 452.135 of the Wisconsin Statutes and is for information only. It is a plain language summary of a broker's duties to a customer under section 452.133 (1) of the Wisconsin Statutes.

CONFIDENTIALITY NOTICE TO CUSTOMERS

Broker will keep confidential any information given to broker in confidence, or any information obtained by broker that he or she knows a reasonable person would want to be kept confidential by law, or you authorize the broker to disclose particular information. A broker shall continue to keep the information confidential after broker is no longer providing brokerage services to you.

The following information is required to be disclosed by law.

1. Material adverse facts, as defined in section 452.01 (5g) of the Wisconsin statutes (see "definition of material adverse facts" below).

2. Any facts known by the broker that contradict any information included in a written inspection report on the property or real estate that is the subject of the transaction. To ensure that the broker is aware of what specific information below. At a later time, you may also provide the broker with other information that you consider to be confidential.

CONFIDENTIAL INFORMATION:

NON-CONFIDENTIAL INFORMATION:

The following information may be disclosed by Broker

INSERT INFORMATION YOU AUTHORIZE THE BROKER TO DISCLOSE SUCH AS FINANCIAL QUALIFICATION INFORMATION

CONSENT TO TELEPHONE SOLICITATION

I/We agree that the Broker and any affiliated settlement service providers (for example, a mortgage company or title company) may call our/my home or cell phone numbers regarding issues, goods and services related to the real estate transaction until I/ we withdraw this consent in writing.
List Home/Cell Numbers:

SEX OFFENDER REGISTRY

Notice: You may obtain information about the sex offender registry and persons registered with the registry by contacting the Wisconsin Department of Corrections on the internet at <http://offender.doc.state.wi.us/public/> or by phone at 608-240-5830.

DEFINITION OF MATERIAL ADVERSE FACTS

A "material adverse fact" is defined in Wis. Stat. 452.01 (5g) as an adverse fact that a party indicates is of such significance, or that is generally recognized by a competent licensee as being of such significance to a reasonable party that it affects or would affect the party's decision to enter into a contract or agreement concerning a transaction or affects or would affect the party's decision about the terms of such a contract or agreement. An "adverse fact" is defined in Wis. Stat. 452.01 (1e) as a condition or occurrence that a competent licensee generally recognizes will significantly adversely affect the value of the property, significantly reduce the structural integrity of improvements to real estate, or present a significant health risk to occupants of the property, or information that indicates that a party to a transaction is not able to or does not intend to meet his or her obligations under a contract or agreement made concerning the transaction.